



These plantings are part of WTMA's *Making Connections* project, funded by the Australian Government's *Caring for Our Country* initiative.

The project **aims to** mobilise landholders to restore, rehabilitate and reconnect the Wet Tropics World Heritage Area in two critical vegetation corridors along the Herberton Range, in the areas around Mount Hypipamee and the East Evelyn Gap.

**Activities** include revegetation, remnant and regrowth rehabilitation, including fencing and weed control, and scientific trials of assisted pasture conversion and micro-habitat creation for small temperature-sensitive species like frogs and skinks.

Project **partners** include: WTMA, TREAT, TKMG, Tablelands Regional Council, Conservation Volunteers Australia, Malanda & Upper Johnstone Landcare, Traditional Owners, Griffith University, JCU, and the University of Queensland, and of course the landholders themselves.

**Learn more at:**  
[http://www.wettropics.gov.au/th/th\\_climate-adaptation.html](http://www.wettropics.gov.au/th/th_climate-adaptation.html)



CARING FOR OUR COUNTRY

*Tired of the doom and gloom about climate change?*

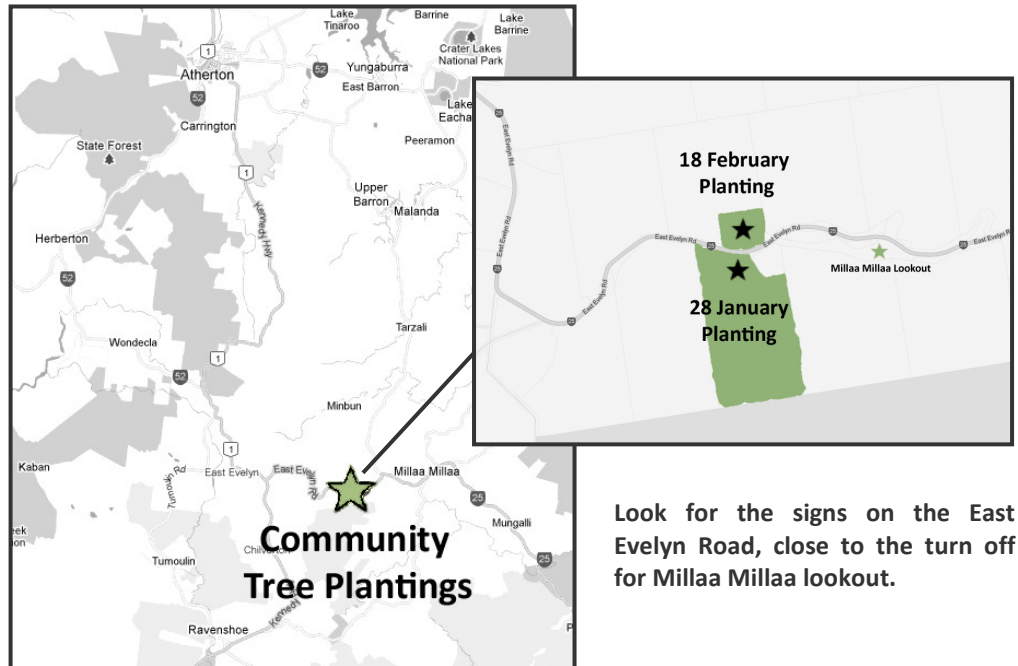
**Want to do something practical to make a difference?**

**Help us improve connectivity for our unique plants and animals by planting trees in a critical high-altitude location in the Wet Tropics!**

# community tree-plantings

will be held at East Evelyn from 8-11am on

**Saturday 28 January and Saturday 18 February 2012**



**Look for the signs on the East Evelyn Road, close to the turn off for Millaa Millaa lookout.**

Wear sturdy footwear, a hat, gloves (optional), sunscreen/wet weather gear, bring a water bottle and your family and friends! Tree planting will take place in the early morning to avoid the heat and finish up with a **FREE BBQ** provided by TREAT and WTMA! Don't worry if you've never planted a tree before – it's fun and easy and we'll show you how! If you need transport from Cairns, please register with Conservation Volunteers Australia ASAP – places are limited – first come, first reserved.

**For more information, please contact:**

**Deb Pople (WTMA) 4051-0543 or Barbara Lanskey (TREAT) 4091-4468**

**or Conservation Volunteers Australia 4032-0844**

**INCLEMENT WEATHER:** please note that planting will go ahead in light/intermittent rain but in the event of heavy rain or a cyclone warning will be postponed until a later date.

**CONNECTIVITY & CLIMATE CHANGE:** Many of our endemic animals are threatened by climate change. As temperatures increase, animals that prefer cooler temperatures (like tree kangaroos, golden bowerbirds, several species of frogs, skinks, and ringtail possums) will try to retreat to cooler areas. However, migration will be difficult in a fragmented landscape. By increasing habitat and restoring connectivity in cool, high areas, we can help increase the resilience of the landscape and reduce the impact of rising temperatures on our unique Wet Tropics wildlife.

