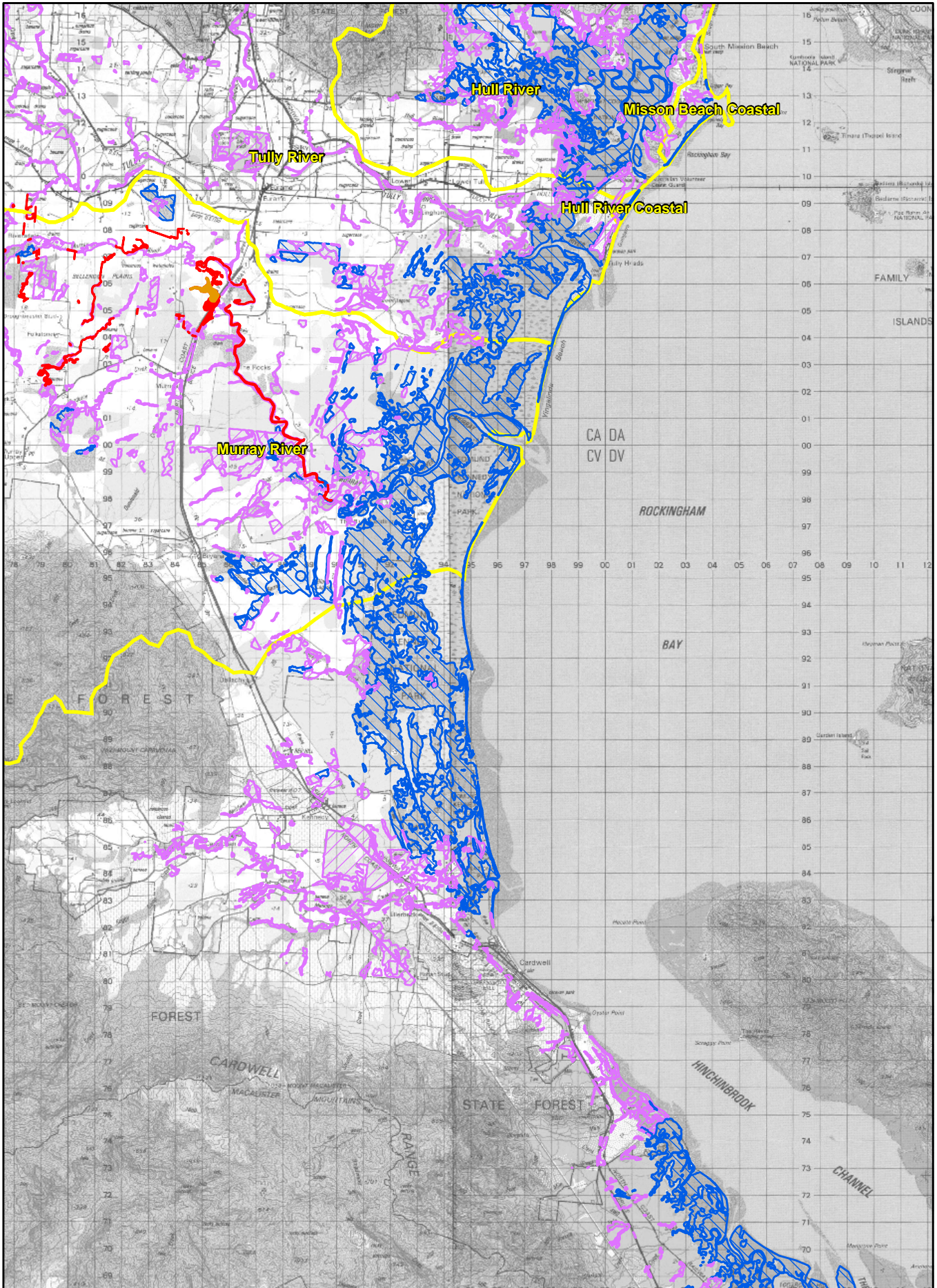


# Map 10 - Pond Apple Infestation - Tully South



**Legend**

Catchment boundary

Existing infestation

Not controlled

Controlled Area

Susceptibility to infestation

High

Moderate

0 1 2 4 6 8

Kilometers

Pond Apple information is derived from project data. Refer to the report "Adaptive Management : Pond Apple Control in the catchments of the Russell-Mulgrave and Tully-Murray river systems". Base mapping is the 1:100,000 Topographic Map Series R631.



Produced 8 June 2004  
GIS Reference J3216-Infest