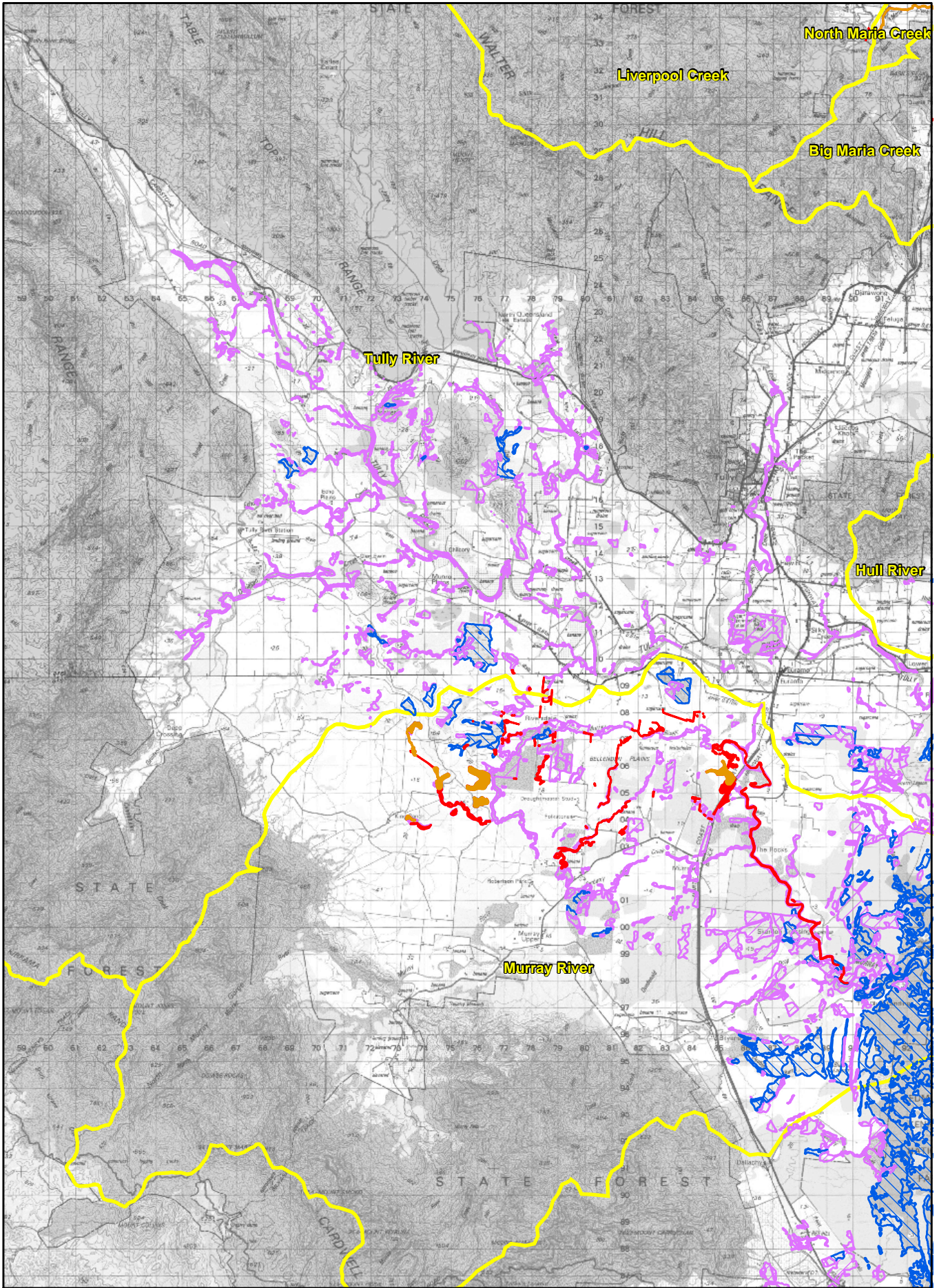
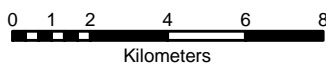


Map 9 - Pond Apple Infestation - Tully West



Legend

- Catchment boundary
- Existing infestation
 - Not controlled
 - Controlled Area
- Susceptibility to infestation
 - High
 - Moderate



Pond Apple information is derived from project data. Refer to the report "Adaptive Management : Pond Apple Control in the catchments of the Russell-Mulgrave and Tully-Murray river systems". Base mapping is the 1:100,000 Topographic Map Series R631.



Produced 8 June 2004
GIS Reference J3216-Infest