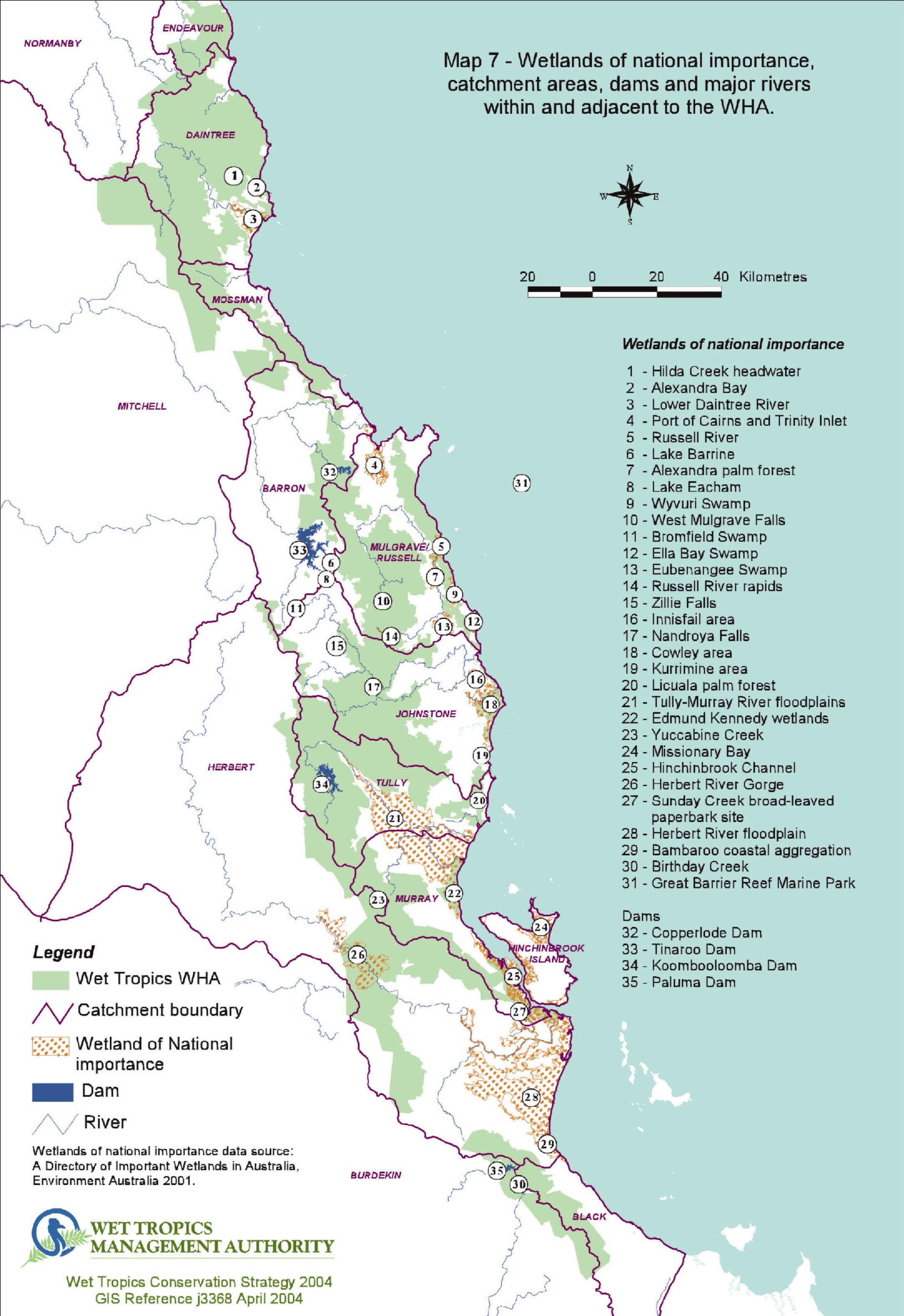


Map 7 - Wetlands of national importance, catchment areas, dams and major rivers within and adjacent to the WHA.



20 0 20 40 Kilometres

Wetlands of national importance

- 1 - Hilda Creek headwater
- 2 - Alexandra Bay
- 3 - Lower Daintree River
- 4 - Port of Cairns and Trinity Inlet
- 5 - Russell River
- 6 - Lake Barrine
- 7 - Alexandra palm forest
- 8 - Lake Eacham
- 9 - Wyvuri Swamp
- 10 - West Mulgrave Falls
- 11 - Bromfield Swamp
- 12 - Ella Bay Swamp
- 13 - Eubenangee Swamp
- 14 - Russell River rapids
- 15 - Zillie Falls
- 16 - Innisfail area
- 17 - Nandroya Falls
- 18 - Cowley area
- 19 - Kurrimine area
- 20 - Licuala palm forest
- 21 - Tully-Murray River floodplains
- 22 - Edmund Kennedy wetlands
- 23 - Yuccabine Creek
- 24 - Missionary Bay
- 25 - Hinchinbrook Channel
- 26 - Herbert River Gorge
- 27 - Sunday Creek broad-leaved paperbark site
- 28 - Herbert River floodplain
- 29 - Bambaroo coastal aggregation
- 30 - Birthday Creek
- 31 - Great Barrier Reef Marine Park

Legend

- Wet Tropics WHA
- Catchment boundary
- Wetland of National importance
- Dam
- River

Wetlands of national importance data source:
A Directory of Important Wetlands in Australia,
Environment Australia 2001.

Dams

- 32 - Copperlode Dam
- 33 - Tinaroo Dam
- 34 - Koombooloomba Dam
- 35 - Paluma Dam