

Tropical Factsheets

Animal Groups of the Cryptosphere

Bacteria

- They are tiny **one-celled** organisms.
- These organisms are the simplest and **smallest** of all life forms.
- They are neither plants nor animals and form a group all of their own.
- They consume sugars in the decaying vegetation.
- Some bacteria can feed themselves because they have chlorophyll.

Protozoa

- These are small **one-celled** animals (slightly bigger than bacteria).
- Some group together in **colonies**.
- They consume sugars in decaying vegetation.

Annelids

- **Earthworms** are segmented worms which are **detritivores** (they eat and break down dead plant matter).

Platyhelminthes

- **Flat worms** are **omnivores** (they eat both plant and animal matter).

Molluscs

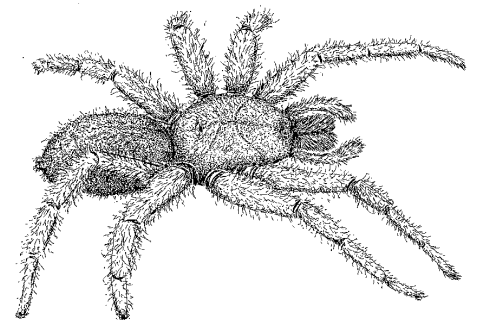
- **Gastropods (snails and slugs)** eat fresh or decaying plant matter.

Myriapods

- **Centipedes** have **one pair** of legs per segment. They are usually **carnivorous**.
- **Millipedes** have **two pairs** of legs per segment. They are usually **herbivorous**.

Arachnids

- **Spiders** are ground-dwelling **carnivores** that prey on insects in the leaf litter.
- **Ticks** are **parasites**.
- **Scorpions** are **carnivores**.
- **Mites** are **omnivores**.

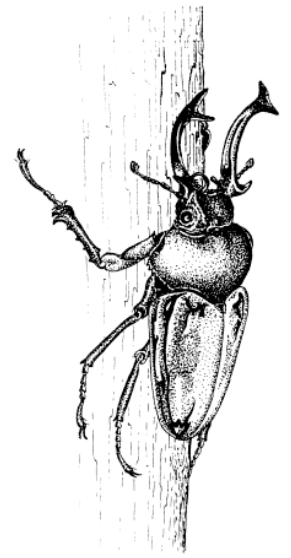


Whistling Spider



Insects

- **Termites** eat wood.
- **Flies** (adults, larvae and pupae) the adults are **blood-suckers**.
- **Ant lions** (adults and larvae) are **insectivores**.
- **Crickets** are **omnivores**.
- **Cockroaches** are **omnivores**.
- **Beetles** (adults and larvae) the larvae **eat wood**.
- **Silverfish** are **detritivores**.



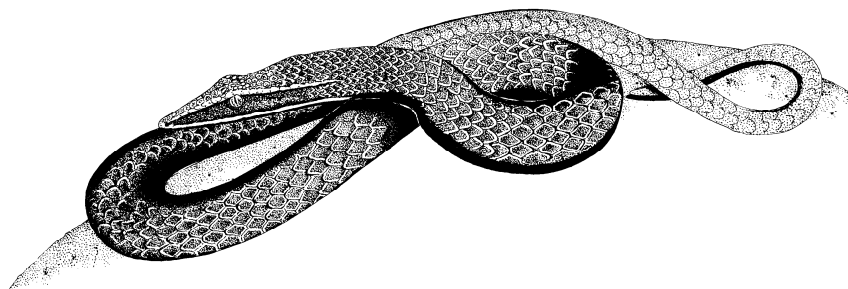
Mueller's Stag Beetle

Amphibians

- **Frogs** are **insectivores**.

Reptiles

- **Blind snakes** are **insectivores** and eat termites and ants.
- **Legless lizards** are **insectivores**.
- **Skinks** are **carnivores**.



Burton's Legless Lizard