

# Tropical Factsheets

## Moths and their food plants

All colourful fruit moths (eg. *Othreis fullonia*, *Khadira aurantia*) are attracted to Pearl Vine (*Stephania japonica* var. *timorensis*).

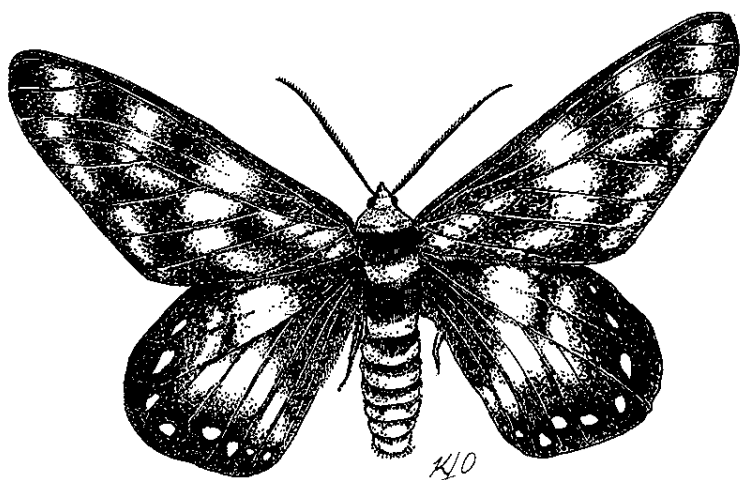
The Hercules Moth is attracted to False Figs (*Timonius timon*, *Timonius singularis*).

The Northern Emperor Moth and Bee Hawk Moth are attracted to Native Limes (*Citrus inodora*).

The Emperor Gum Moth, Ghost Moths and Giant Cossid Moths are attracted to eucalypts and bottlebrushes (*Callistemon* species).

The Four O'clock Moth is attracted to Corky Bark (*Carallia brachiata*).

The Harlequin Moth and six species of Hawk Moths are attracted to Slender Grape (*Cayratia*) and Native Grape/Watervine (*Cissus*).



*Four O'clock Moth*